

Installation Instructions – Nayax Cable

Part No:	0510-00007	Type:	Installation
Date:	21/02/2024	Distribution:	Internal-External
Product Family:	Spike II – New Coin Door Type	Region(s):	All

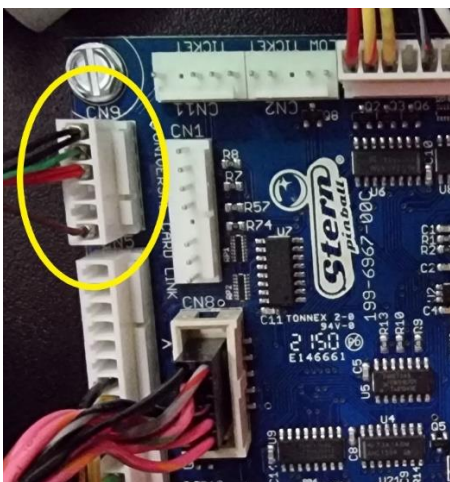


Locate the cable supplied with your order – it has a Molex in line connector at one end which will be connected to the Stern Cabinet Node Board, and a Molex Duo Clasp connector at the other end, which will be connected to the Nayax Card Acceptor Unit



Connect the Duo Clasp connector to the socket located on the rear of your Nayax Unit. Here it is shown installed, but we recommend fitting this connector before installing the unit.

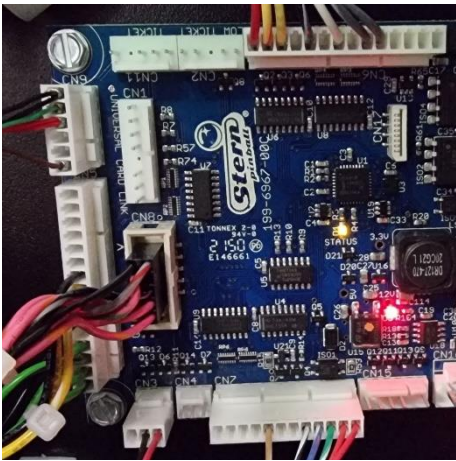
(It may help to put a 90-degree bend in the cable near the connector to facilitate easy insertion of the connector into the socket)



Ensure the machine power is switched off (or as a minimum, ensure that the +48VDC supply to the Cabinet Node Board is disabled by opening the coin door switch)

(Note the Cabinet Node Board is located just inside the cabinet on the left-hand side wall - all LEDs should be extinguished on the Cabinet Node Board prior to connection)

Locate CN9 as shows in the image to the left, at the top left of the Cabinet Node Board, and plug the other end of the cable onto the header



Apply power to the machine or activate the +48VDC by operating the interlock on the coin door switch, depending upon previous method of power isolation chosen earlier in the process

(Note – the interlock switch can be operated by pulling the interlock outwards, or by closing the coin door)



Check that the Nayax Card Reader successfully powers up

(Note – the Nayax Readers are sometimes slow to boot, so please allow 2 mins for the display to come up)



Tidy up the cable assembly harness by routing the Nayax Interface Cable through the mesh shield located above the door interlock switch

Your device is now attached to the Coin 6 Input line for the Stern Spike II Crediting System so you will need to go into the pricing options menu and allocate the correct number of coin pulses for your credit configuration.

For UK operators, there is a default configuration for the Nayax VPOS Touch and Onyx, in the Machine Model section of your Dashboard entitled “Pulse – Pulse Machines – Parallax Default Pulse”. This is set to have default tabs for £1, £2, £5, and £10, and will give one pulse for each £1 value, across the coin 6 input line. For this, the coin 6 input is set to 10 units, which equates to £1 per pulse, so that the systems match, but other options can be configured for other currencies as required.